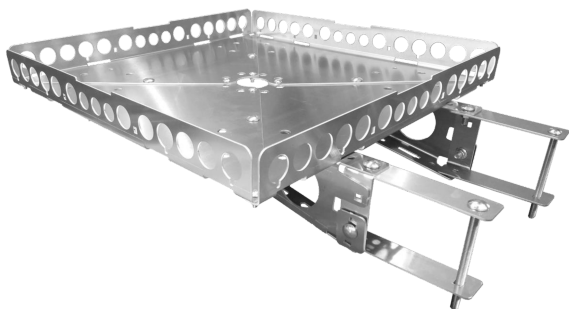


# GennyGo<sup>TM</sup> RevX SELECTION GUIDE

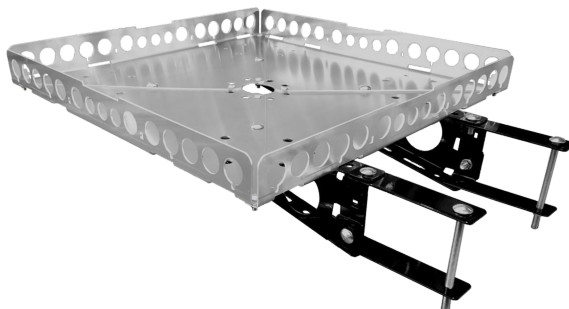
Choose the Bumper-Mounted Tray Kit That Best Meets Your Needs

## STANDARD DUTY



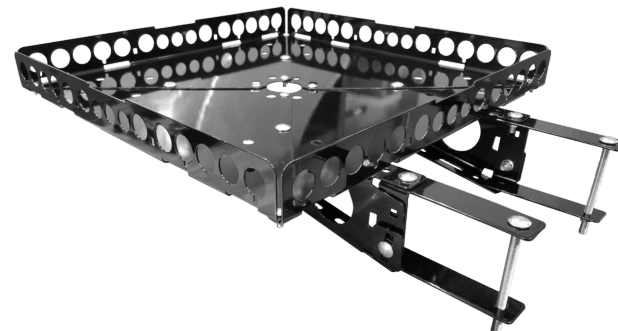
### **GGKA** GennyGo<sup>TM</sup> RV Bumper Mounted Generator & Cargo Tray - **Aluminum**

Ideal for Short Trailers, Ultralight Campers, and Pop-Ups  
Aluminum Tray Pan + Aluminum Support Arms & Brackets  
Assembly Weighs 11 Pounds and Carries 125 Pound-Feet\*



### **GGKH** GennyGo<sup>TM</sup> RV Bumper Mounted Generator & Cargo Tray - **Hybrid**

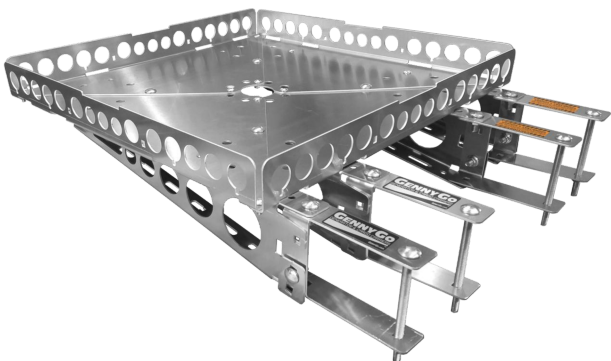
Same Capacity as Steel Kit in a Much Lighter Package  
Aluminum Tray Pan + Steel Support Arms & Brackets  
Assembly Weighs 15 Pounds and Carries 200 Pound-Feet\*



### **GGKS** GennyGo<sup>TM</sup> RV Bumper Mounted Generator & Cargo Tray - **Steel**

Rugged All-Steel Kit with Durable Glossy Black Finish  
Steel Tray Pan + Steel Support Arms & Brackets  
Assembly Weighs 23 Pounds and Carries 200 Pound-Feet\*

## HEAVY DUTY



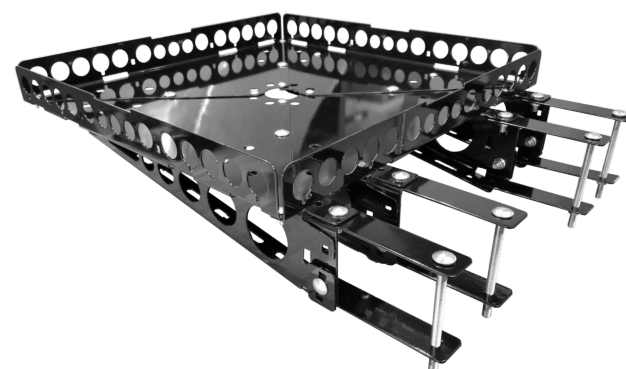
### **GHKA** GennyGo<sup>TM</sup> RV **Heavy Duty** Generator & Cargo Tray - **Aluminum**

Lower Weight Yet Higher Capacity Than Standard Steel Kit  
Aluminum Tray Pan + 2 pair Alum. Support Arms & Brackets  
Assembly Weighs 15 Pounds and Carries 250 Pound-Feet\*



### **GHKH** GennyGo<sup>TM</sup> RV **Heavy Duty** Generator & Cargo Tray - **Hybrid**

Same Capacity as HD Steel Kit in a Much Lighter Package  
Aluminum Tray Pan + 2 Pair Steel Support Arms & Brackets  
Assembly Weighs 23 Pounds and Carries 400 Pound-Feet\*



### **GHKS** GennyGo<sup>TM</sup> RV **Heavy Duty** Generator & Cargo Tray - **Steel**

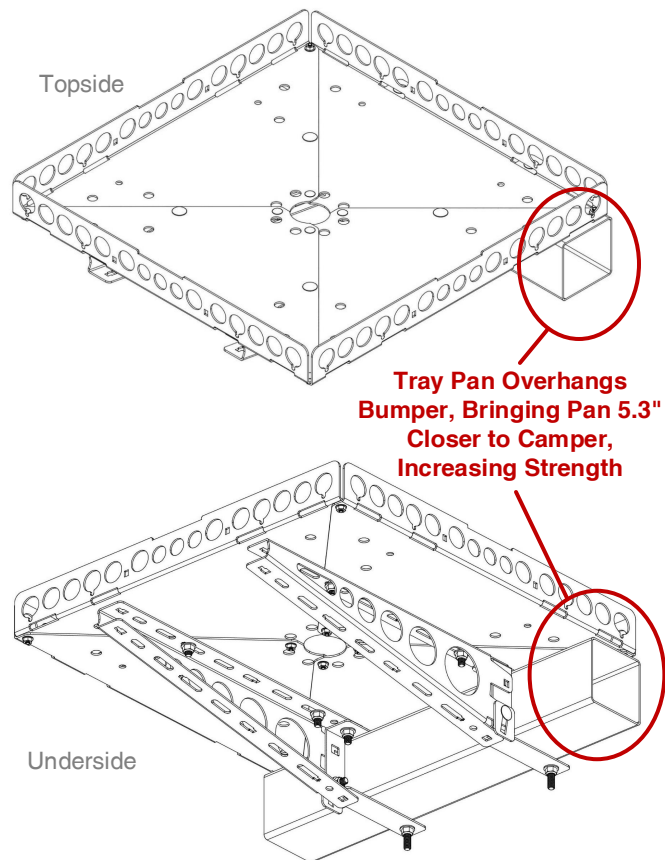
Same Capacity as HD Steel Kit in a Much Lighter Package  
Steel Tray Pan + 2 pair Steel Support Arms & Brackets  
Assembly Weighs 31 Pounds and Carries 400 Pound-Feet\*

\* Pound-feet is the weight of cargo (in pounds) multiplied by the distance the center of weight is from the bumper (in feet).

Visit [www.mount-n-lock.com/pound-feet](http://www.mount-n-lock.com/pound-feet) for additional information.

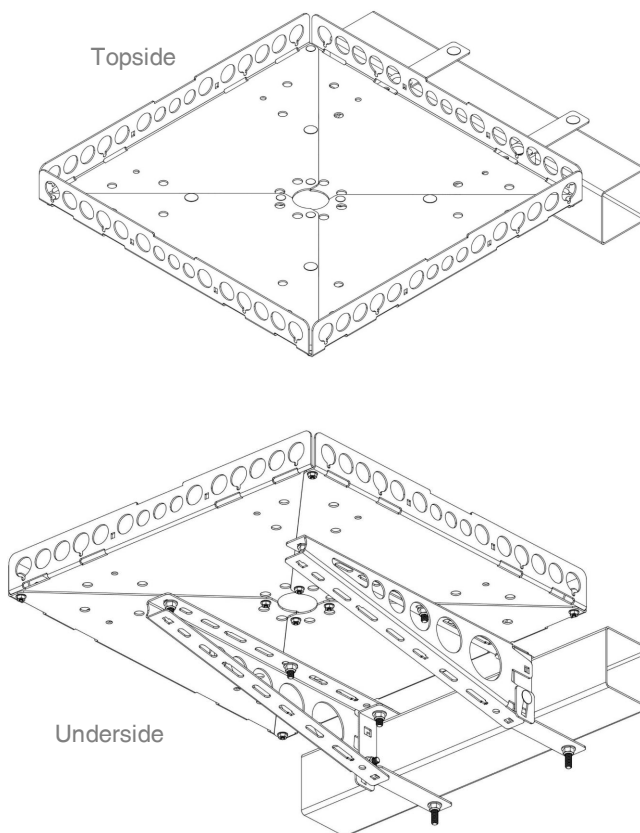
# GennyGo<sup>TM</sup> RevX ASSEMBLY OPTIONS

Assemble Your GennyGo<sup>TM</sup> RevX Tray Kit in Any of These Ways!



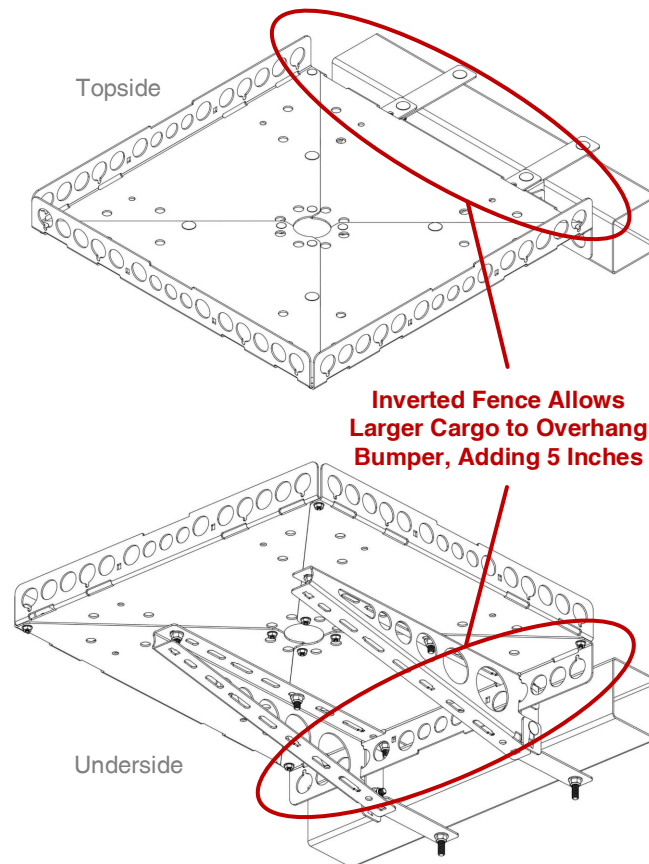
## COMPACT ASSEMBLY

Ideal for Heavier Items (Moves Weight Inward)  
Pan Mounts Over Bumper (5" Less Extension)  
**Won't Work Where Body Overhangs Bumper**



## STANDARD ASSEMBLY

Ideal for RVs Where Body Overhangs Bumper  
Allows for the Combining of Additional Trays  
Allows for Use of Ramps (with Sides Inverted)



## EXTENDED ASSEMBLY

Ideal for Larger Cargo (Creates 29" Deep Area)  
Allows for the Combining of Additional Trays  
Allows for Use of Ramps (with Sides Inverted)

\* Pound-feet is the weight of cargo (in pounds) multiplied by the distance the center of weight is from the bumper (in feet).

Visit [www.mount-n-lock.com/pound-feet](http://www.mount-n-lock.com/pound-feet) for additional information.

# GennyGo<sup>TM</sup> RevX FEATURES

Simply the Most Versatile Generator and Cargo Carrier Available!

**Use 8 Center Tie-Down Points to Better Secure Smaller Cargo**

**Over 60 Tie-Down Points Around the Perimeter!**

**TONS of TIE-DOWNS!**  
**Most of any Carrier Tray!**

**Use Sliding Shims to Add Tray Up-Angle**

**COMBINE TRAYS!**  
**Double Tray Setup**

**COMBINE TRAYS!**  
**Quad Tray Setup**

**COMBINE TRAYS!**  
**Triple Tray Setup**